

1900 Series

- Spun Octagon
- Available in heights up to 20'

Pole Dimensions

Pole No.	[A] Above Ground Height	[B] Burial Depth	[C] Tip Diameter	Base Diameter	Est. Pole Weight (lbs)*
D1913	13'	4-1/2'	6"	15-5/16"	1,000
D1916	16'	5'	5-3/8"	15-5/16"	1,100
D1920	20'	5'	4-3/4"	15-5/16"	1,200
A1920	20'	----	4-3/4"	15-5/16"	1,000

*Pole weight may vary based on color of aggregate.

Pole Code

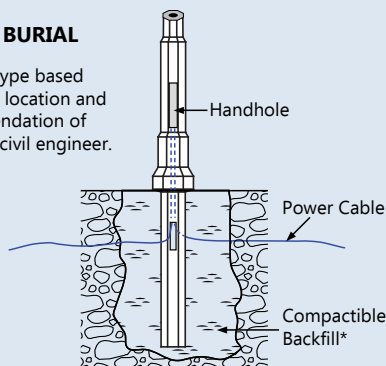
Mounting Type	Series + Above Ground Height	Color	Finish	Sealer	Options
(D) Direct Burial (A) Anchor Base	1913 1916 1920	(SG) Sky Gray (PG) Pearl Gray (SP) Salt & Pepper (CN) Cinnamon (BZ) Bronze (CB) Charcoal Black (MS) Midnight Sky Black (EB) Eclipse Black (DB) Dark Black (SR) Sedona Red (AR) Antique Red (RG) Red Granite (TC) Terra Cotta (KG) Kelly Green (AW) Alpine White	(E) Etched	(A) Acrylic (W) Waterseal (G) Anti-Graffiti	(B) Banner Arm (F) Finial (I) Threaded Insert (O) Outlet (T) Tenon Standard tenon size 2-7/8" OD x 3" tall

Example Code: **D1920** - **SG** - **EA** - **3T**

Base Detail

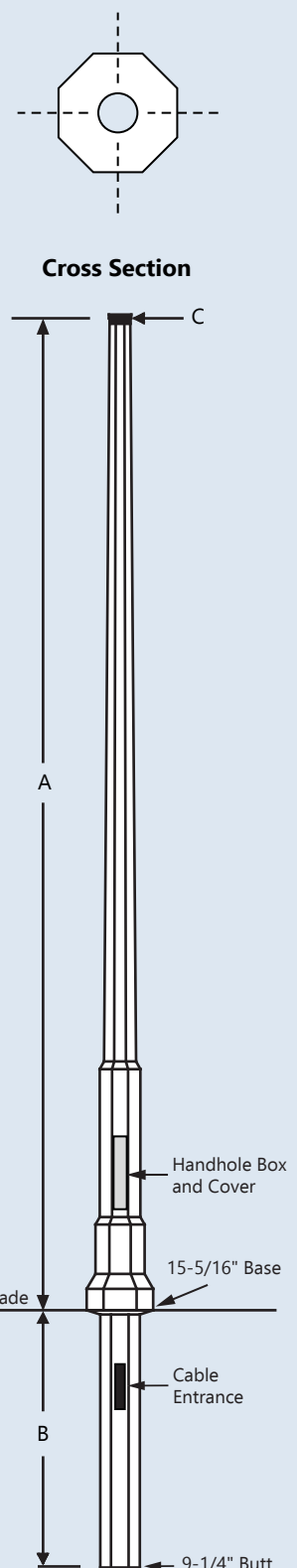
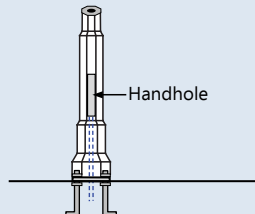
DIRECT BURIAL

*Backfill type based on soil of location and recommendation of qualified civil engineer.



ANCHOR BASE

- 3" Recess for Bolt Access
- 1.5" x 2" Bolt Slot on 12.5" B.C.
- 3" Hole in Plate
- 1/4" Threaded Inserts to Mount Bolt Covers



PO Box 157
W142 N9110 Fountain Blvd.
Menomonee Falls, WI 53052-0157
(888) 719-7599
(262) 250-7598 fax
info@concretepoles.com
www.concretepoles.com